

# HM-60S

## Closed Door Horizontal Stretch Baler



Shown With Standard Hopper

### Harmony's HM-60S Is The Ideal Solution For:

- Distribution Centers
- Manufacturing Plants
- Recycling Centers

### Industry-Leading Warranty:

- 1 Year Labor
- 2 Year Parts
- 3 Year Structure & Cylinder

### Compare These Features of the HM-60S With the Competition:

- Large 54" x 70" Feed Opening
- 175,000 LBS. Of Force
- 3,000 PSI High-Performance Hydraulic System
- Dual 6" Bore x 127" Stroke Cylinders
- Heavy-Duty Interlocking Chassis
- 400 Brinell Wear Liners & 27-Point Chassis Shear Blade
- Automatic Material Retaining Dogs
- Full Eject System That Clears The Chamber After Each Bale
- Ability To Switch Materials Without Shutting Down
- Low Oil & Hot Oil Shutdown

### Harmony's HM-60S Horizontal Baler:

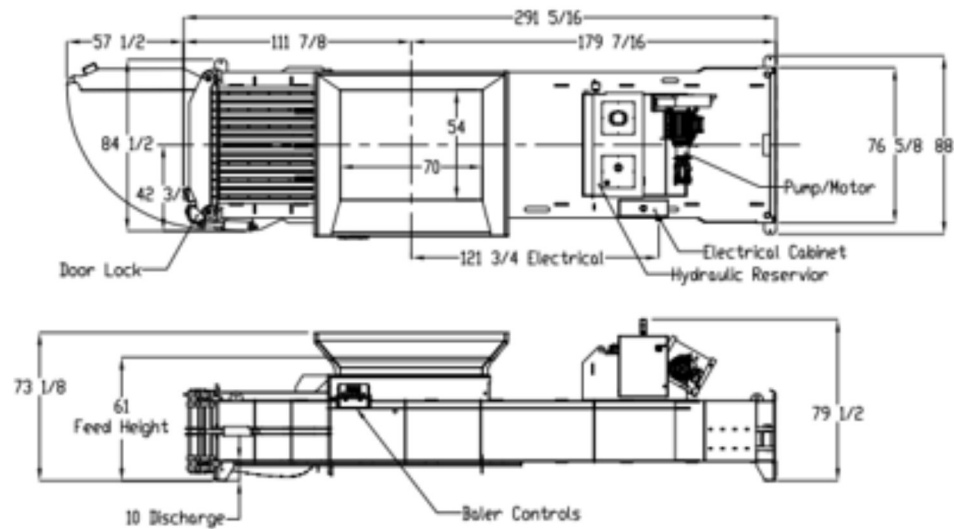
- Is Built To Withstand Harsh Environments
- Improves Your Business Appearance & Workplace Safety
- Increases Profitability & Efficiency



Color Touch Screen Display



## Harmony HM-60S

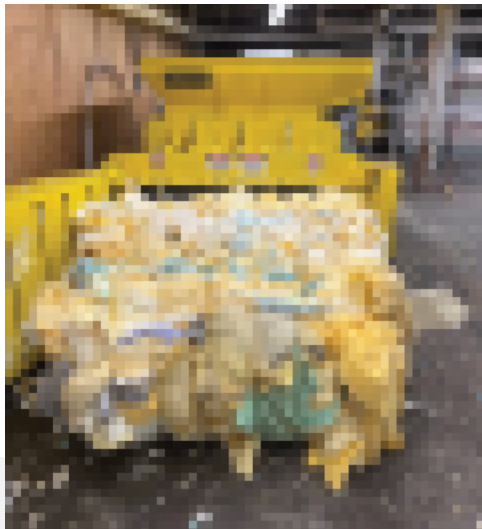


### Standard HM-60S Features:

- Extended Length Bale Dogs
- UL® Listed Control Panel
- Remote Mounted Controls
- Low Oil & Hot Oil Shutdown Protection
- Automatic Bale Decompression
- Hydraulic Door Latch
- Option For Feed Conveyor Integration
- Meets Or Exceeds ANSI & OSHA Standards

### Bale Weights Produced By The HM-60S:

- OCC: 1,300 LBS. Short Stroke  
1,400 LBS. Full Stroke
- Polyurethane Foam: 1,300 LBS.



MODEL	HM-60S
<b>Specifications</b>	
Bale Size	30" X 60" X 35"
Bale Weight	1,300 LBS. Poly Foam
Ram Force	175,000 LBS.
System Pressure	3,000 PSI
No Load Cycle Time	40 Seconds
Electrical Power	208 230 415 460 575 Volt, 3 Phase, 60 Cycle TEFC
Motor	20 HP (30 HP Optional)
Cylinder	Dual 6" Bore X 127" Stroke
Pump	48 BPM Piston Pump
Bale Eject	Full Bale Eject
Bale Tying	Manual Wire
<b>Dimensions</b>	
Overall Height	73"
Overall Length	291.5"
Overall Width	84.5"
Charge Chamber Opening	54" X 70"
Shipping Weight	24,000 LBS.
<i>*Specifications Subject To Change</i>	

*\*Specifications Subject To Change*

