



Solutions for Waste & Recycling
Harmony[™]
ENTERPRISES, INC.



M48HD

High Density Vertical Baler



The M48HD Vertical Baler is the Ideal Solution For:

- Supermarkets
- Hotels/Motels
- Department Stores
- Manufacturing Facilities
- Colleges/Universities
- Industrial/Commercial Sites
- Shopping Centers

Setting the standard for performance and value.

Compare these features of the M48HD with the competition:

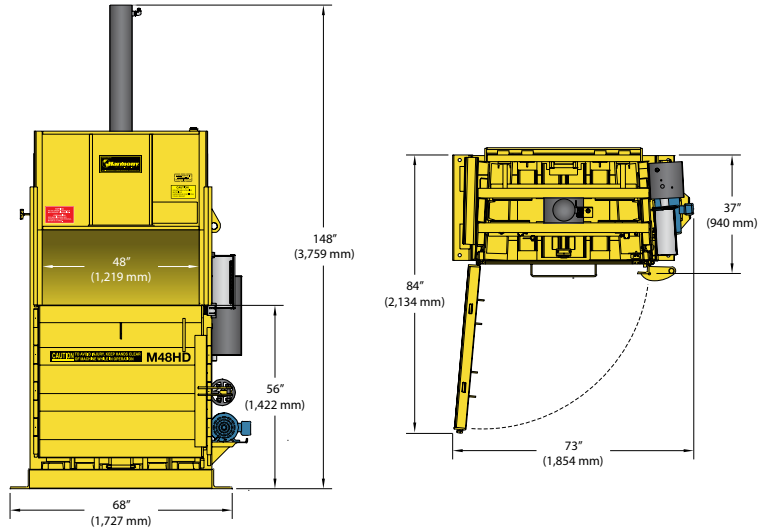
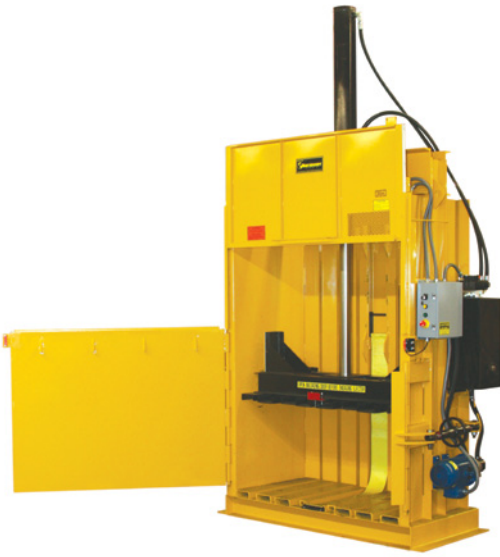
- The M48HD has the power of larger vertical balers incorporated into a compact design
- This baler will handle many of your recycling needs with ease and speed
- Will produce up to 750 pound cardboard bales

- 45 second cycle time
- Designed for safe, one-person operation
- Lower cost of operation when compared to larger vertical balers
- Reduces your waste disposal costs and saves you money

The M48HD High Density Vertical Baler, another great idea from Harmony Enterprises...
The Undisputed Leader in Quality Manufacturing.



M48HD Vertical Baler



Standard M48HD Features:

- Control panel is UL® listed
- Powerful 6" cylinder with heavy-duty 3.5" rod for extra long life
- Enclosed counterbalance for upper door lifting ease
- Heavy-duty hydraulic ejection for extra dense bales
- Heavy-duty motor and hydraulics for extra long life
- Meets or exceeds all ANSI and OSHA safety standards



SPECIFICATIONS

Bale Size	48"W x 30"D x up to 48"H (1,219mm x 762mm x up to 1,219mm)
Bale Weight (corrugated)	up to 750 lbs. (340 kg)
Ram Pressure	50,893 lbs. (23,085 kg)
Cycle Time	45 seconds
Cylinder	6" bore (152 mm) 3.5" rod (89 mm) 42" stroke (1,067 mm)
Motor	5 horsepower, 3,450 RPM, TEFC
Pump	12 gallons per minute
Electrical Power	208/230/460 volt, 3 phase, 60 hz
Bale Eject	Hydraulic
Bale Tying	Wire or banding

DIMENSIONS

Loading Door Opening	24x 48" (610 mm x 1,219 mm)
Unloading Door Height	56" (1,422 mm)
Overall Height	148" (3,759 mm)
Overall Depth	37" (940 mm)
Overall Width	68" (1,727 mm)
Depth with Door Open	84" (2,134 mm)
Width with Door Open	73" (1,854 mm)
Shipping Height	71" (1,803 mm)
Shipping Weight	1,850 lbs. (839 kg)
Installation and Operating Area	42 square feet (3.9 square meters)

