

HM-A160

Open End Auto Tie Baler



Harmony's HM-A160 Horizontal Baler is the Ideal Solution For:

- Distribution Centers
- Manufacturing Plants
- Recycling Centers

Industry-Leading Warranty

Harmony provides an industry leading warranty of 1 year parts and labor on all auto tie and two ram horizontal balers!

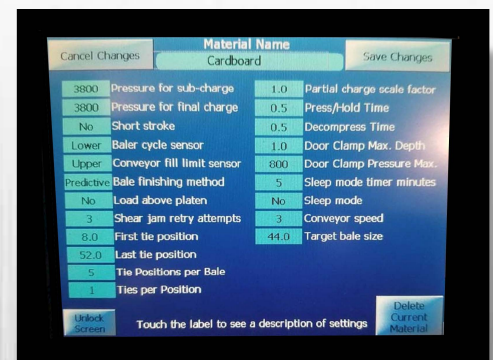


Compare these features of the HM-A160 with the competition:

- 20 and 30 HP Motors Have Power Pack On Back, 40 - 60 HP Motors Have Remote Power Pack Standard w/ Heavy Duty Oil Cooler 3 HP – 31.5 GPM
- Interlocking Construction
- Nyl-oil Side and Bottom Ram Wear Blocks
- Color Touch Screen Controls
- High Temperature/Low Oil Alarms
- Full Oil Reservoir -- READY TO RUN
- Allen-Bradley "MicroLogix" Programmable Controller
- 3 Phase, 60 Cycle, 480 VAC TEFC Motors
- Feed Hopper with Hinged Access Door and Safety Interlock Switch
- Bale Chamber with Hinged Access Door and Safety Interlock Switch
- Meets or Exceeds ANSI and OSHA standards
- Hydraulic Regeneration Circuit
- Hydraulic System With Low Oil & Hot Oil Shutdown

Harmony's HM-A160 Open End Auto Tie Baler

- Is built to handle the duty cycle use in paper converting baling.
- Designed for high volume operation and baling of corrugated boxes, folding cartons, print, and other paper based products.
- Increases profitability and efficiency.



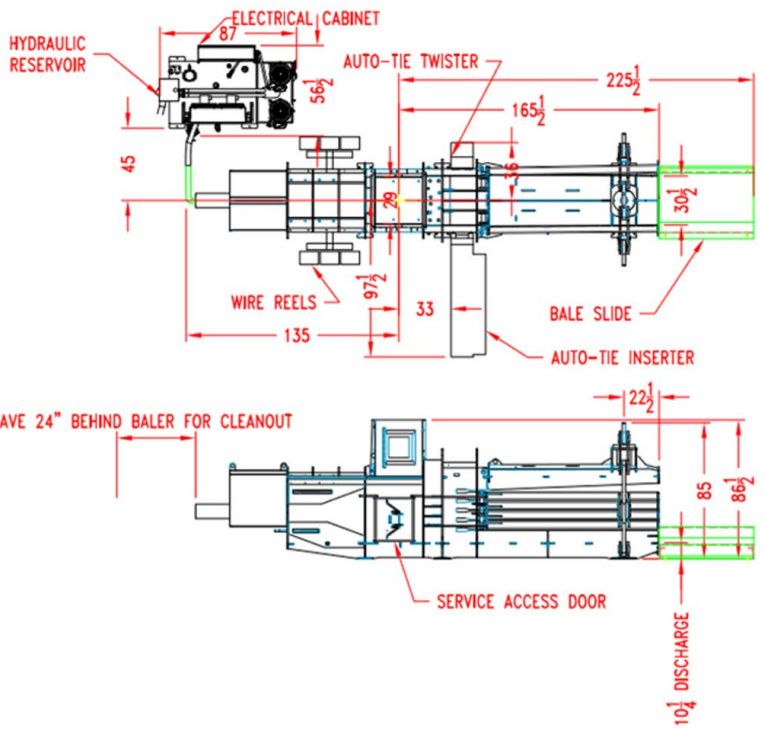
10.4" Color Touch Screen Display



HM-A160 Open End Auto Tie Baler

HM-A160 Features

- A-Frame single cylinder tension chamber
- Advanced shear blade design
- Gear-driven twister
- Lower ram chassis inspection door
- Key lock cylinder for longevity
- Raiser kit for easy cleaning
- High strength steel plate floor
- Hopper sizes to adapt with any air conveying system
- Fast 7.7-16 second cycle time
- Impressive no load displacement of up to 18,700 cf/hr
- Hydraulic System With Low Oil & Hot Oil Shutdown



HM-A160 Horizontal Baler

SPECIFICATIONS

Bale Size	30" W x 40" D x Variable L (762 mm x 1,016 mm)
Bale Weight (Corrugated)	up to 1,750 lbs. (771 kg)
Ram Force	161,634 lbs. (73,316 kg)
System Pressure	4,200 PSI
No Load Cycle Time	7.7-16 seconds
Electrical Power	208-220/440-550 Volt, 3 Phase, 60 Cycle, T.E.F.C.
Motor	20, 30, 40, or 60 HP
Cylinder	7" Bore (178 mm)
Hydraulic Reservoir Capacity	150 or 300 gallons
Bale Tying	Five wire electric auto tie

DIMENSIONS

Overall Height	86.5" (2,197 mm)
Overall Length	360.5" (9,157 mm)
Overall Width	133.5" (3,391 mm)
Feed Opening	30" x 30" or 30" x 40"
Shipping Height	86.5" (2,197 mm)
Shipping Weight	32,000 lbs. (14, 515 kg)
Installation and Operating Area	334.21 sq ft (31.05 sq m)

*Specifications subject to change without notice.



SAI GLOBAL
ISO 9001
Quality