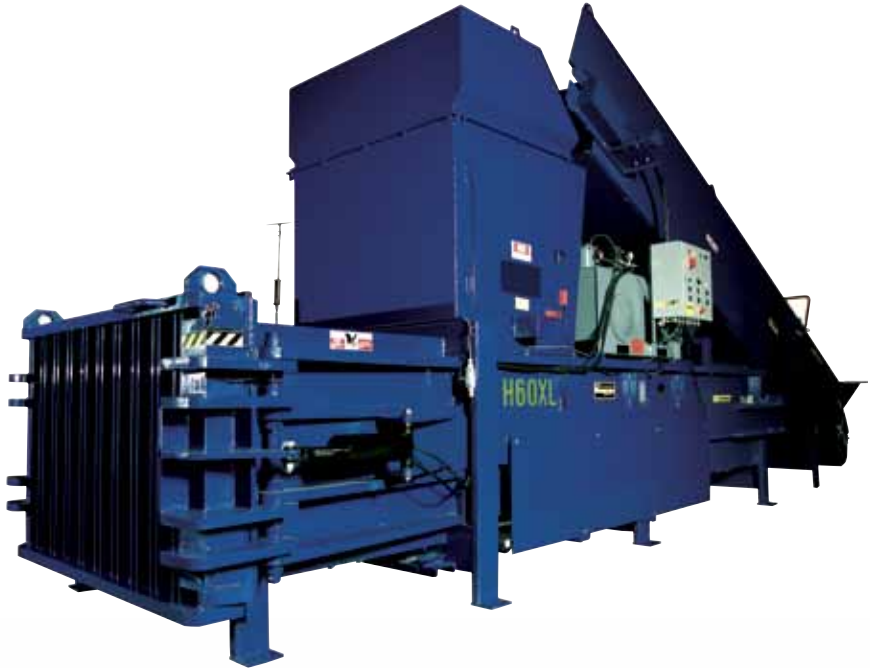


H60 and H60XL

Horizontal Balers



The The H60 and H60XL Horizontal Balers are the Ideal Solution For:

- Distribution Centers
- Beverage Facilities
- Manufacturing Facilities
- Recycling Centers
- Scrap Yards

The difference in the model numbers reflects the difference in the charge/feed opening. The H60 has a charge/feed opening 53" x 42" and the H60XL has one of 53.5" x 52.5".



The H60 and H60XL are high-capacity baler with our industry exclusive Semi-Automatic Wire Feeder.

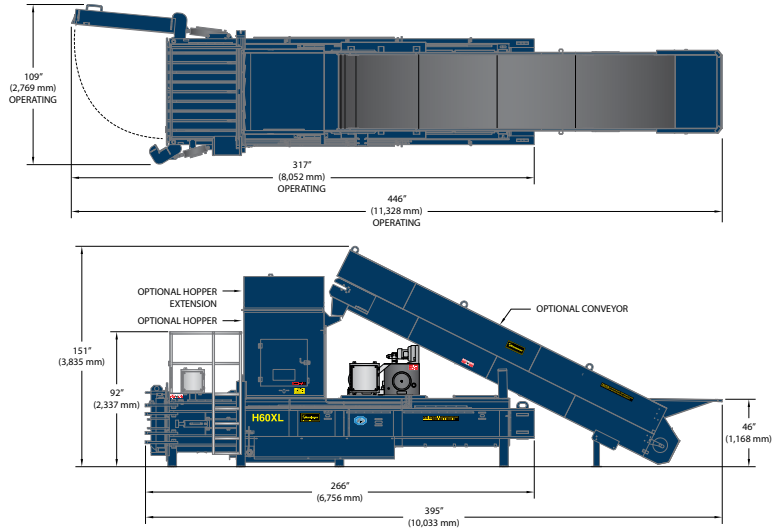
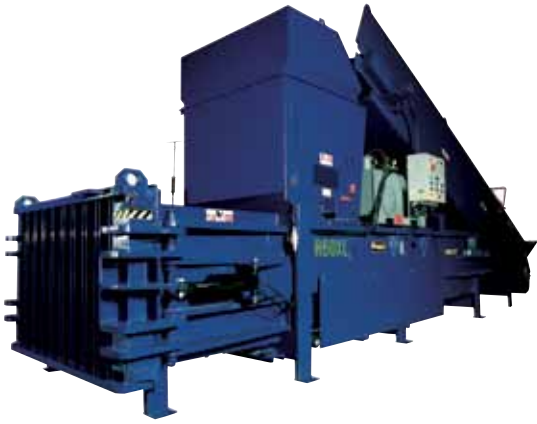
Compare these features of the H60XL with the competition:

- 8" cylinder with 5" rod
- Over 150,000 pounds of ram force
- Offers 50% less tying time with no wire guides and **patent approved** semi-automatic wire feed technology
- Hydraulic operating unload door for easy open/close and added safety
- Increases recycling revenue
- Reduces waste disposal costs

- Built to withstand the harshest environments
- Improves your business appearance and increases workplace safety
- Increases profitability and increases labor efficiency
- Optional feed conveyor available

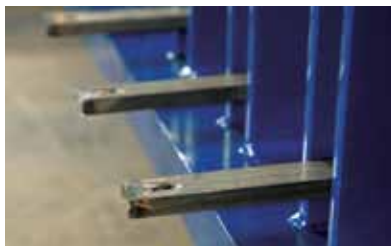
The H60 and H60 XL Horizontal Balers, **two more** great ideas from Harmony Enterprises...*The Undisputed Leader in Quality Manufacturing.*

H60 and H60XL Horizontal Balers



Standard H60 and H60XL Features:

- Control panel is UL® listed
- Key operated selector switch
- Bale full light
- Oil level sight gauge
- Electrical disconnect non-fused
- Oil cooler
- Meets or exceeds ANSI and OSHA safety standards



The H60 and H60XL Horizontal Balers feature an industry first Semi-Automatic Wire Feeder, eliminating the use of wire guides, which is the number one complaint for closed-door horizontal balers. This Harmony Enterprises patented technology cuts tying time by over 50% thus lowering your labor costs.

SPECIFICATIONS

Bale Size	30" x 60" x up to 48" (762 mm x 1,524 mm x up to 1,219 mm)
Bale Weight (cardboard)	1,000 - 1,200 lbs. (454 kg - 544 kg)
Ram Force	150,800 lbs. (68,402 kg)
System Pressure	3,000 psi
Cycle Time	48 seconds
Cylinder	8" bore (203 mm) 5" rod (127 mm) 106" stroke (2,692 mm)
Motor	20 horsepower, TEFC
Pump	Heavy-duty piston
Electrical Power	208/230/460 volt, 3 phase, 60 hz
Bale Eject	Hydraulic
Bale Tying	Wire

DIMENSIONS

Overall Height (without hopper)	Varies depending on order options
Overall Length	Varies depending on order options
Overall Width	111" (2,819 mm)
Charge Chamber Opening	H60: 53" x 42" - H60XL: 53.5" x 52.5"
Shipping Height	Varies depending on order options
Actual Weight	20,000 lbs. (9,072 kg)
Installation and Operating Area	230 square feet (21.4 square meters)

Specifications subject to change without notice.



SAI GLOBAL
ISO 9001
Quality

Harmony Enterprises, Inc. 704 Main Avenue North Harmony, MN 55939 USA
1.800.658.2320 toll free | 1.507.886.6666 international | 1.507.886.6706 fax
Email us at info@harmony1.com or visit us online at www.harmony1.com

©2009 Harmony Enterprises, Inc. All rights reserved. Form HEI_H60XL_US 01/12 SC