

S60XDRC

Automatic Baling System



The S60XDRC Automatic Baling System is the Ideal Solution For:

- Textile Recyclers
- Commercial Recycling Centers
- Large Industrial Centers
- Scrap Yards
- Redemption Centers

With it's ultra deep ram penetration, the S60XDRC creates incredibly dense bales each and every time!

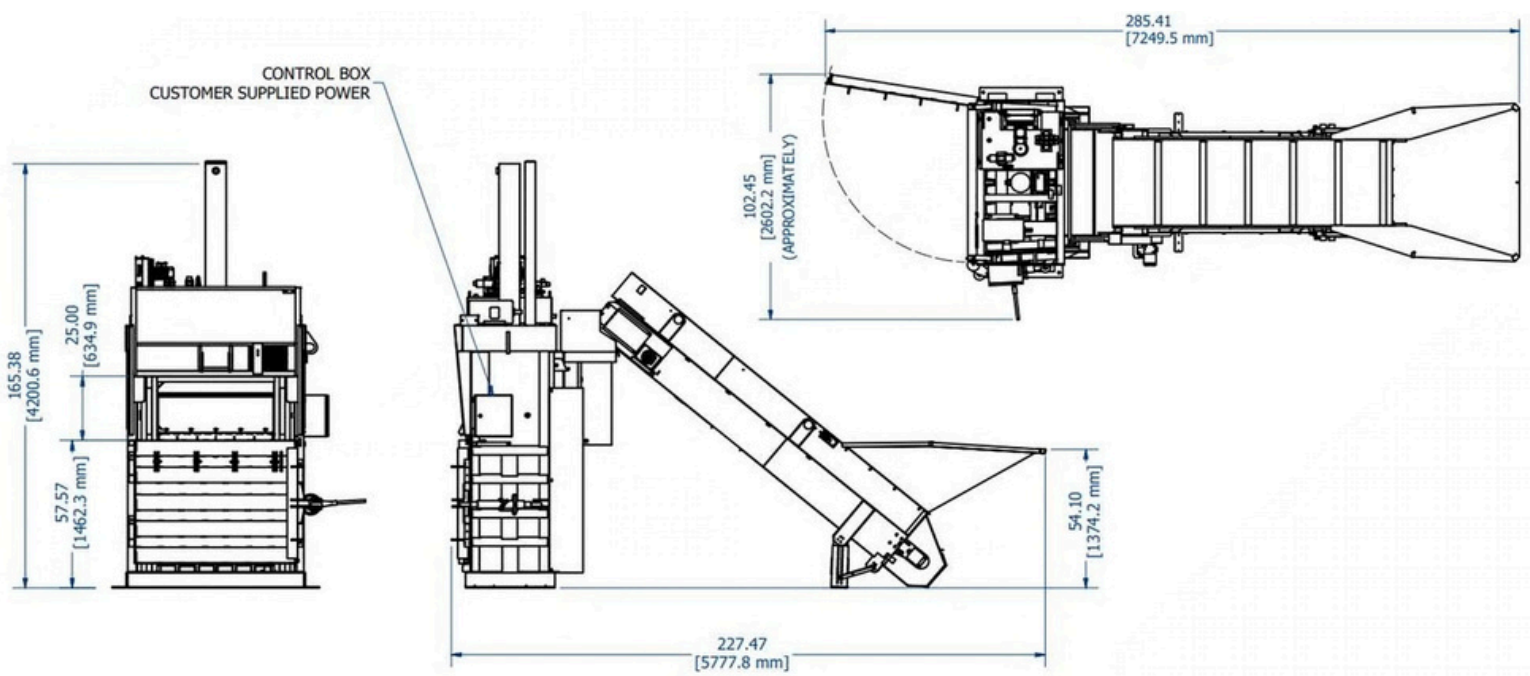
Compare these features of the S60XDRC with the competition:

- Large 7" cylinder
- Fast 40 second cycle time
- Ram penetration to within 10" of the floor produces ultra dense bales
- These bales bring you a higher market value, saving space, money and transportation costs
- It has the power and capacity to quickly and efficiently bale a large variety of materials
- Ability to manually feed various materials through the front door

- Designed for many years of reliable, trouble free service
- Stronger heavy-duty construction than comparable balers
- Making operation more profitable for the user with it's rear hopper and conveyor loading system saving labor and preparation time
- Standard retractable bale dogs for maximum material containment
- Oil cooler standard
- Cylinder safety cable standard on all S60XDRC models.

The S60XDRC Automatic Baling System, another great idea from Harmony Enterprises... *The Solutions Provider For Waste Handling & Recycling!*





Bale Weights Produced By S60XDRC:

- Corrugated Cardboard: up to 1000 lbs.
- Aluminum Cans: up to 400 lbs.
- PET Beverage Bottles: up to 550 lbs.
- HDPE: up to 1200 lbs.
- Steel Cans: up to 1695 lbs.
- Magazine/Newsprint: up to 1200 lbs.
- Polystyrene: PENDING
- Tires: PENDING
- Clothing: up to 1125 lbs.
- Milk Jugs: up to 1200 lbs.
- Refuse Garbage: PENDING
- Aluminum Siding: PENDING



MODEL	S60XDRC
Specifications	
Bale Size	30" x 60" x Up to 48" (762 MM x 1,524 MM x 1,219 MM)
Bale Weight (OCC)	Up to 1,000 LBS. OCC (454 KG)
Ram Force	92,360 LBS. (41,894 KG)
Cycle Time	39 Seconds
Electrical Power	208/230/460 Volt, 3 Phase, 60 HZ
Motor	20 HP, 1,725 RPM, TEFC
Cylinder	7" Bore (178 MM) 4.5" Rod (114 MM) 64" Stroke (1,626 MM)
Pump	16 Gallons Per Minute
Bale Eject	Hydraulic
Bale Tying	Wire or Polyethylene Twine
Dimensions	
With Conveyor	
Loading Door Opening	25" x 60" (635 MM x 1,524 MM)
Unloading Door Height	58" (1,473 MM)
Overall Height	166" (4,216 MM)
Overall Depth	228" (5,791 MM)
Overall Width With Door Open	103" (2,616 MM)
Depth With Door Open	286" (7,264 MM)
Shipping Height	117" (2,972 MM)
Shipping Height (On Side)	88.5" (2,248 MM)
Actual Weight	8,825 LBS. (4,003 KG)
Operational Area	156 SQ FT (14.5 SQ M)

**Specifications Subject to Change*

