

HM60

Full Eject Horizontal Baler



Shown With Optional In - Ground Conveyor

Harmony's HM60 Horizontal Baler is the Ideal Solution For:

- Distribution Centers
- Manufacturing Plants
- Recycling Centers
- Scrap Yards

Industry-Leading Warranty

Harmony provides an industry leading warranty of 1 year labor, 2 year parts, and 3 year structure and cylinder!

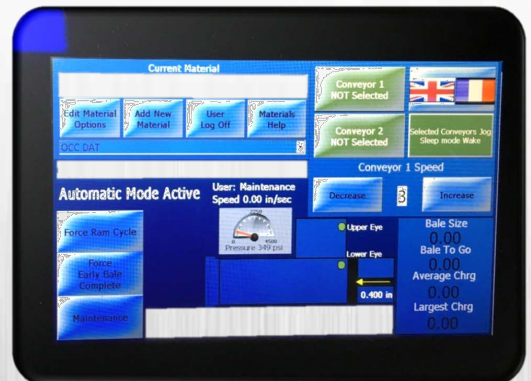


Compare these features of the HM60 with the competition:

- 7" Eaton Color Touch Screen
- 187,468 pounds of ram force
- 54" x 40" Feed Opening
- 400 Brinell Wear Liners
- 27-point chassis shear blade
- Gravity-actuated retaining dogs
- High efficiency hydraulics
- Interlocking Chassis
- Non-Ferrous Door
- Over-sized cylinder mounts

Harmony's HM60 Horizontal Baler

- Is built to withstand the harshest environments.
- Improves your business appearance and workplace safety.
- Increases profitability and efficiency.
- Has an optional feed conveyor available.

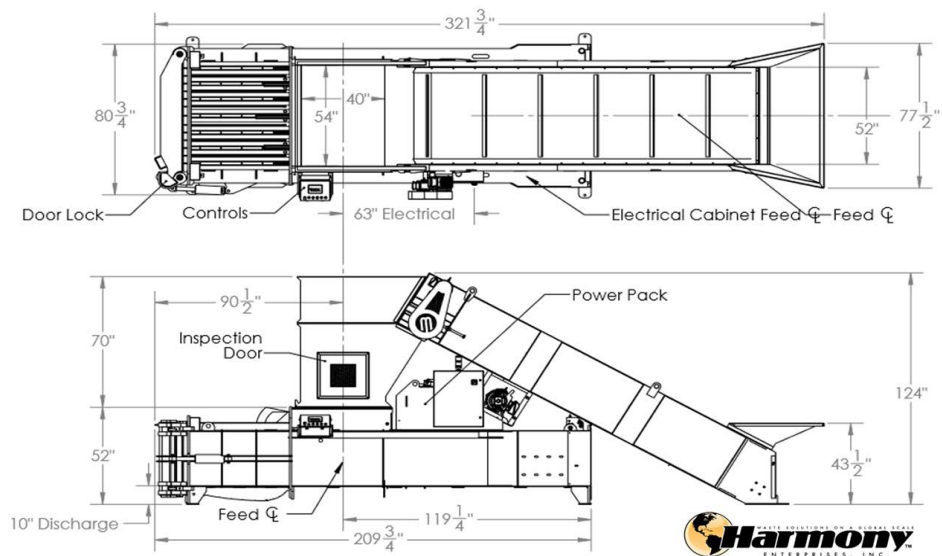


Screenshot of Touch Screen Display

Harmony HM60 Horizontal Baler



HM60 Horizontal Baler



Standard HM60 Features

- Control Panel Is UL® Listed
- Automatic Bale Decompression
- Remote Mounted Controls
- Hydraulic Door Latch
- HMI Allows User To Select Commodity Being Baled
- Meets Or Exceeds ANSI and OHSA Safety Standards

Bale Weights Produced By HM60:

- OCC: 1,500 lbs short stroke
1,600 lbs long stroke
- Magazines: 2,000 lbs
- Newspaper: 1,500 lbs
- Office Paper: 1,600 lbs
- Aluminum Cans: 700 lbs
- Tin Cans: 1,250 lbs
- HDPE: 1,125 lbs
- PET: 1,000 lbs

*Bale weights are approximate and may differ with moisture content, material density, etc.

SPECIFICATIONS

Bale Size	30" x 60" x 12-50" (variable length) (762mm x 1524mm x 304.8-1270 mm)
Bale Weight (Cardboard)	1500 lbs-1600 lbs (680kg - 726kg)
Ram Force	187,468 lbs (85,034 kg)
System Pressure	3,800 PSI Operating ; 4,200 PSI Maximum
No Load Cycle Time	28 Seconds
Electrical Power	208/230/575 Volt, 3 Phase, 60 Cycle, TEFC
Motor	20HP
Cylinder	Dual 5.5" bore x 88" stroke
Pump	48 GPM Piston Pump
Bale Eject	Full Bale Eject
Bale Tying	Manual/Wire

DIMENSIONS

Overall Height	52 1/4" frame (1320.8 mm)
Overall Length	206 3/4" (5232.4 mm)
Overall Width	76 1/4" (1930.4 mm)
Charge Chamber Opening	54" x 40" (1372 mm x 1016 mm)
Shipping Height	90" (2286 mm)
Shipping Weight	22,000 lbs (9979 kg)
Installation and Operating Area	81" W x 322" L x 152" H with conveyor (2058 mm x 8179 mm x 3861 mm)

*Specifications subject to change without notice.



Harmony Enterprises, Inc. 704 Main Avenue North Harmony, MN 55939 USA
 1.800.658.2320 toll free | 1.507.886.6666 international | 1.507.886.6706 fax
 Email us at info@harmony1.com or visit us online at www.harmony1.com

©2019 Harmony Enterprises All Rights Reserved.